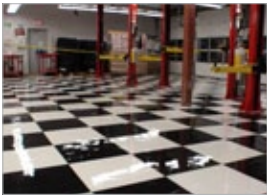
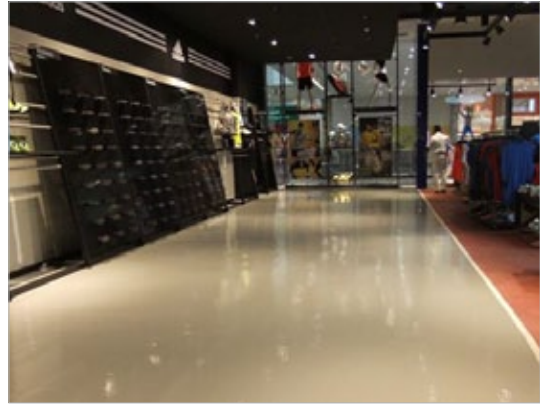


# HERMETIC™ Neat

Flooring System



CSI Division 9: Finishes - Flooring

**elite crete systems**

Engineered High Performance Surfaces & Flooring

**HERMETIC™ Neat Floor** is a high build, self leveling, clear or pigmented resinous flooring system engineered for industrial applications.

**TYPICAL AREAS OF USE**

HERMETIC™ Neat Flooring Systems is intended for floors subject to medium to high foot traffic, fork lift and rubber wheel carts. Typical uses include:

- Warehouses
- Manufacturing areas
- Laboratories & clean rooms
- Automobile service areas & garages
- Exhibition halls
- Medical & educational facilities
- Aircraft hangars

**ADVANTAGES**

- Ease of maintenance
- Protects the substrate
- Aesthetic improvements
- Increases the strength of the substrate
- Hard and abrasion resistant
- VOC free - CA 01350 air quality compliant
- Stain and chemical resistant
- Anti-microbial
- Satin or gloss finish
- Fast set available for quicker turn around time
- Electrostatic dissipative finish is optional

**SPECIFICATION OVERVIEW**

- Name: HERMETIC™ Neat Floor
- Finish: Gloss or satin
- Cured thickness: @ 40 to 65 mils
- Surface preparation and detailed application instructions per manufacturer
- Manufacturer: Elite Crete Systems, Inc. +1-219-465-7671

**SAMPLE COLOR CHART**



**NOTE:** The colors depicted on this technical document may not illustrate the exact color. Contact a technical support representative for a more accurate color sample. Custom colors available upon request. **\* Novalac Only**

**PHYSICAL PROPERTIES**

(@ 73°F / 23°C, 7 day ambient cure as a coating)

PROPERTY	TEST	RESULT
VOC Content	N/A	0 g/l
Shore D Hardness	ASTM D-2240	80
Water Absorption (2hr boil)	ASTM D-570	0.03 %
Toxicity	N/A	None*
Heat Distortion Temperature	ASTM D-648	130 F / 55 C
Compressive Strength	ASTM D-695	12,300 psi
Tensile Strength	ASTM D-638	3,200 psi
Flexural Strength	ASTM D-790	4,800 psi
Abrasion Resistance **	ASTM D-4060	9 mg loss
Slant Shear	ASTM C-882	100% concrete failure
Flammability	ASTM D-635	Self-extinguishing
Flame Spread Rate (NFPA 101)	ASTM E-84	Class A
Elongation at Break	ASTM D-638	6.5 %
Perm Rating	ASTM E-96-13	>0.10 @ 16 mils. Class 1
Chemical resistance	Contact technical representative for chart	
Coefficient of Friction	Adjusted per requirement. Generally 0.50 to 0.80	
COF Guidelines:	ADA Flat Surfaces	0.60
	ADA Inclined Surfaces	0.80
	OSHA	0.50
	NFPA	0.68

\* FDA & USDA Acceptable      \*\* CS-17 Wheel, 1 KG load, 1,000 cycles



**Elite Crete Systems, Inc.**

1061 Transport Drive  
Valparaiso, Indiana 46383

Phone: +1.219.465.7671      Fax: +1.219.531.0898

Toll Free: 888-323-4445

Email: info@elitecrete.com

**www.elitecrete.com**

The information herein is general information to assist our customers in determining whether our products are suitable for their specific applications. Our products are intended for sale to commercial and industrial customers. We require that customers should inspect and test our products before use to satisfy themselves as to the content and suitability for the applications they intend to use our products for. Nothing herein shall constitute any warranty expressed or implied, including any warranty of merchantability or fitness for a particular purpose, nor is replacement of our materials and in no event shall we be liable for incidental or consequential damages.